

DOMINION MAISONETTE

BY



— LUXURY REDEFINED



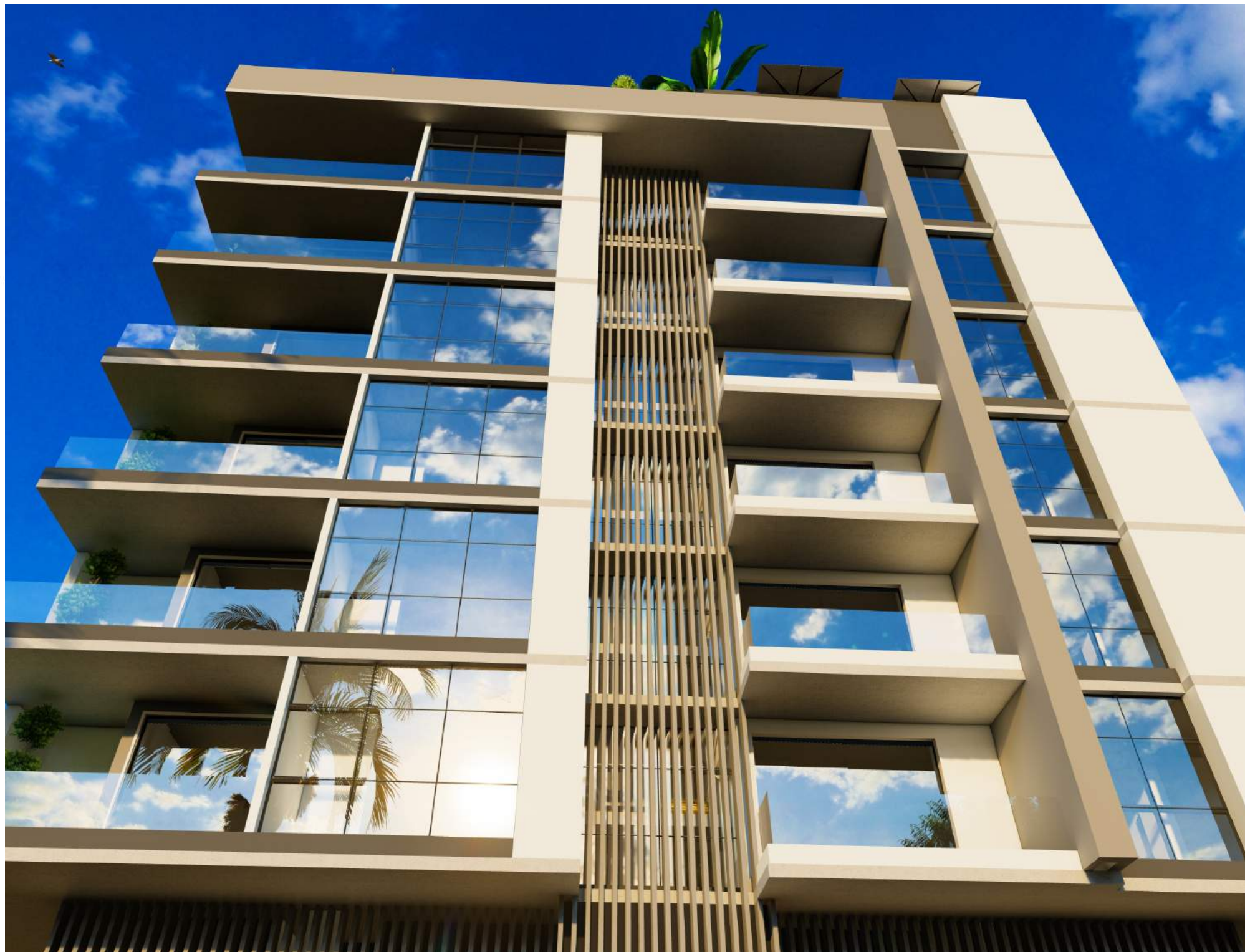
BANANA ISLAND IKOYI

DOMINION MAISONETTE



B
A
N
A
N
A

I
S
L
A
N
D





B
A
N
A
N
A

I
S
L
A
N
D



If you're Classy, Bold & Confident, then you're on the right place

*No one is you and that will always be your power.
You can make them stop and stare or just do it your own way.
However you choose, your happiness & peace of mind should
always come first.
Reward yourself for your hardworking and enjoy all the good
attention.*

"Remember the Mona Lisa doesn't belong in a basement"

Buy DOMINION MAISONETTE, milk it for what it's worth..





B
A
N
A
N
A

I
S
L
A
N
D

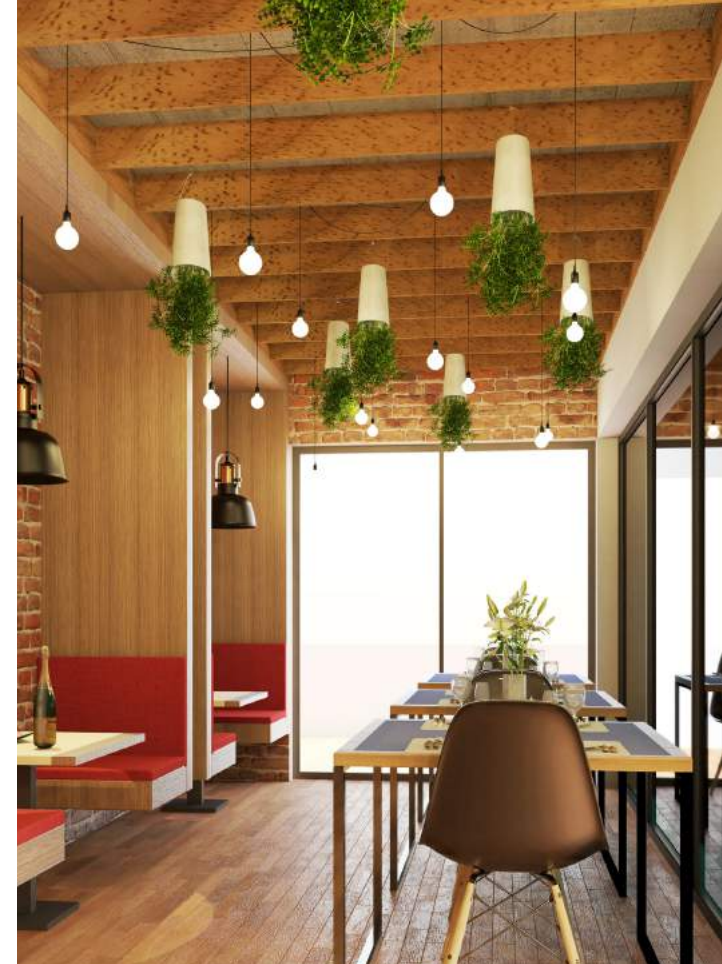
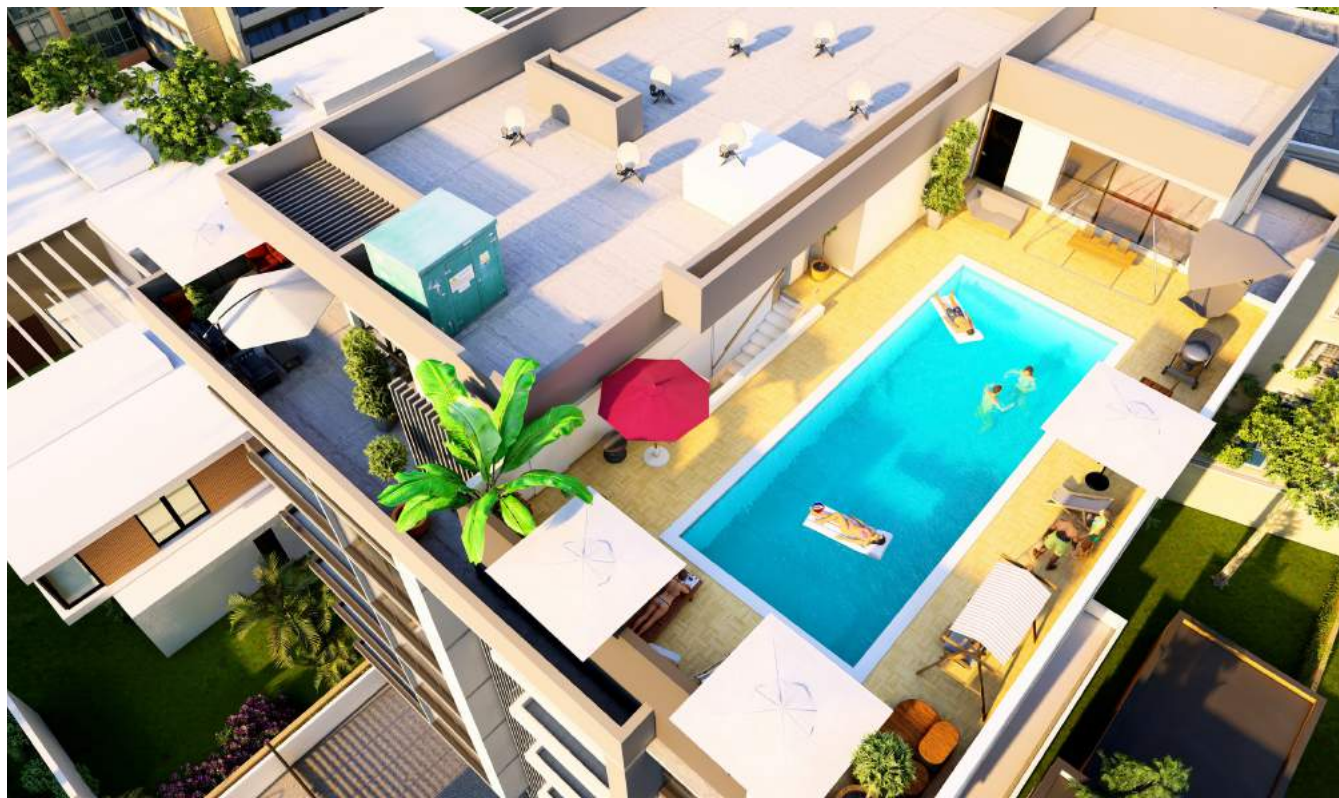


— LUXURY REDEFINED

— WWW.WICHTECHHOMES.COM

A view so absorbing from
the rooftop with a pool to
soak it in





86,400 seconds in every day, enjoy all of it here.

Unrivalled outdoor paradise featuring state-of-the-art rooftop amenities such as: Swimming pool, Gymnasium, Spa, Sauna, Green area, Party lounge and Clubhouse.

With the breathtaking entertainment spaces and views which seemingly go on forever from multiple vantage points on the pent floor, your Heart and Mind will always be at peace.



Rooftop Amenities



Swimming pool



Gymnasium



Spa



Sauna



Clubhouse



Party lounge



Cafe



Green area



P
A
L
A
T
I
A
L

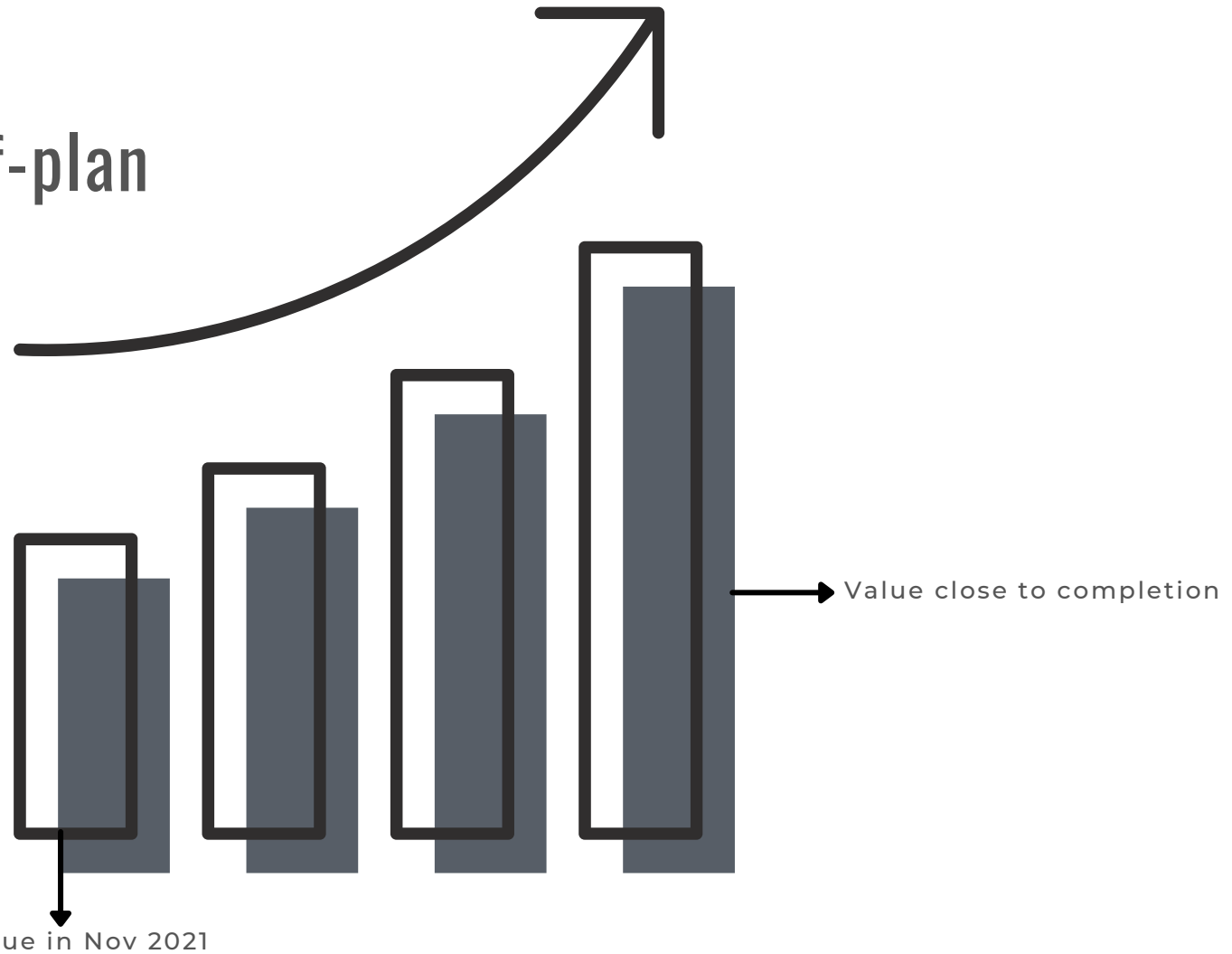
L
I
V
I
N
G

R
O
O
M





Buying Off-plan



“Purchase prices are significantly lower than the average while you can attain strong Capital growth or even resell at a Profit before completion.”



“High returns and Capital growth are two key attributes to be considered when Buying an off-plan for Investment.”



“Gives the opportunity to buy the property with Convenient deposits and Staged payments.”



You can have an input into the central decor and general fittings.”



Rental Value

Banana Island is a place of unrivaled opulence and grandeur. It is truly the most expensive neighborhood of Nigeria's high net-worth individuals with luxuries such as good road layout, underground electrical systems and water supply networks, treatment plant, standard security, constant power, central sewage system, shopping mall and playground.

Property prices inside Banana Island appreciates fast due to the high market demand. The rental value for a luxury four bedroom maisonette is within the range of \$75,000USD - \$90,000USD per annum depending on the finishing, amenities and maintenance.



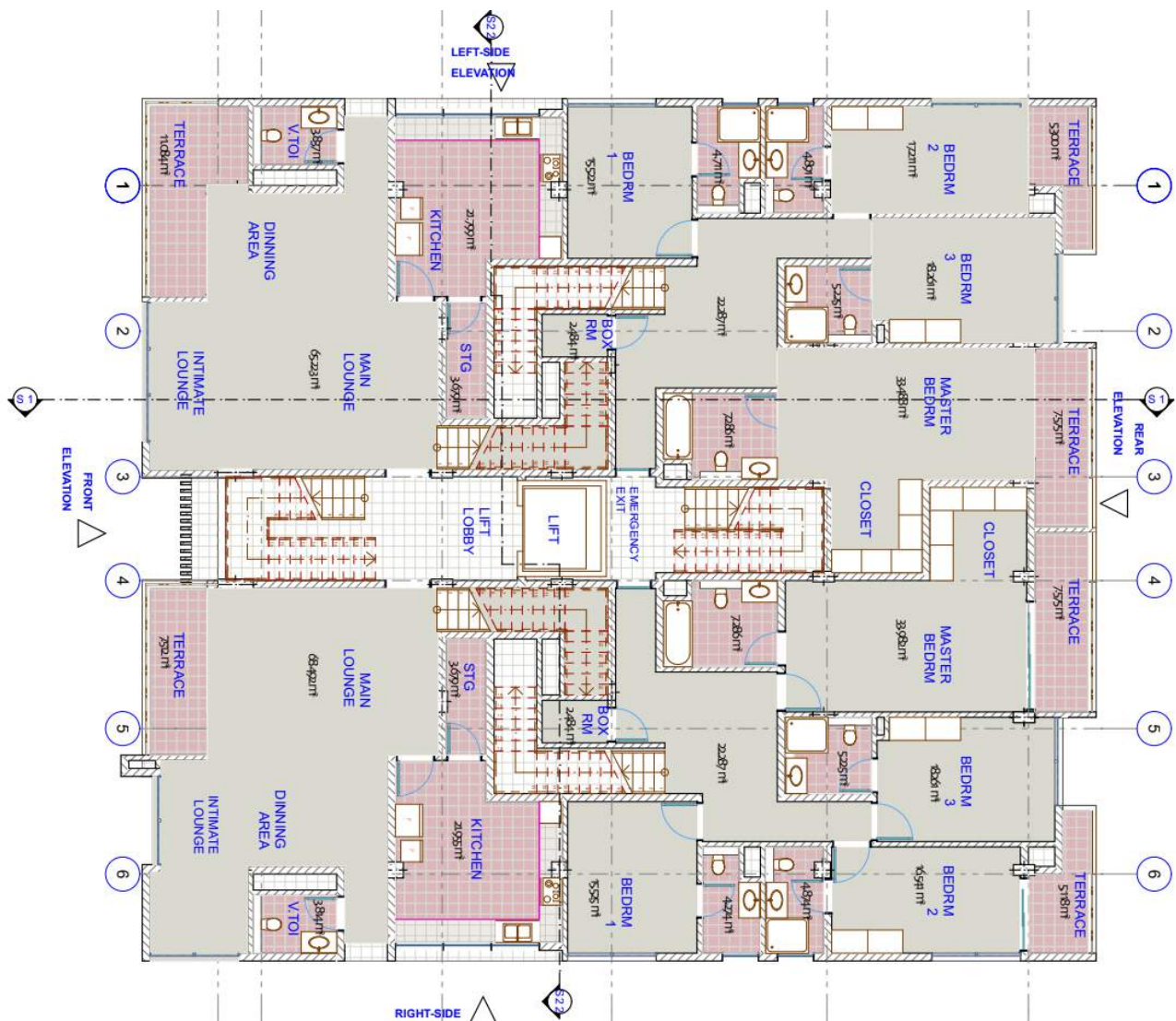
Happiness looks gorgeous on you.

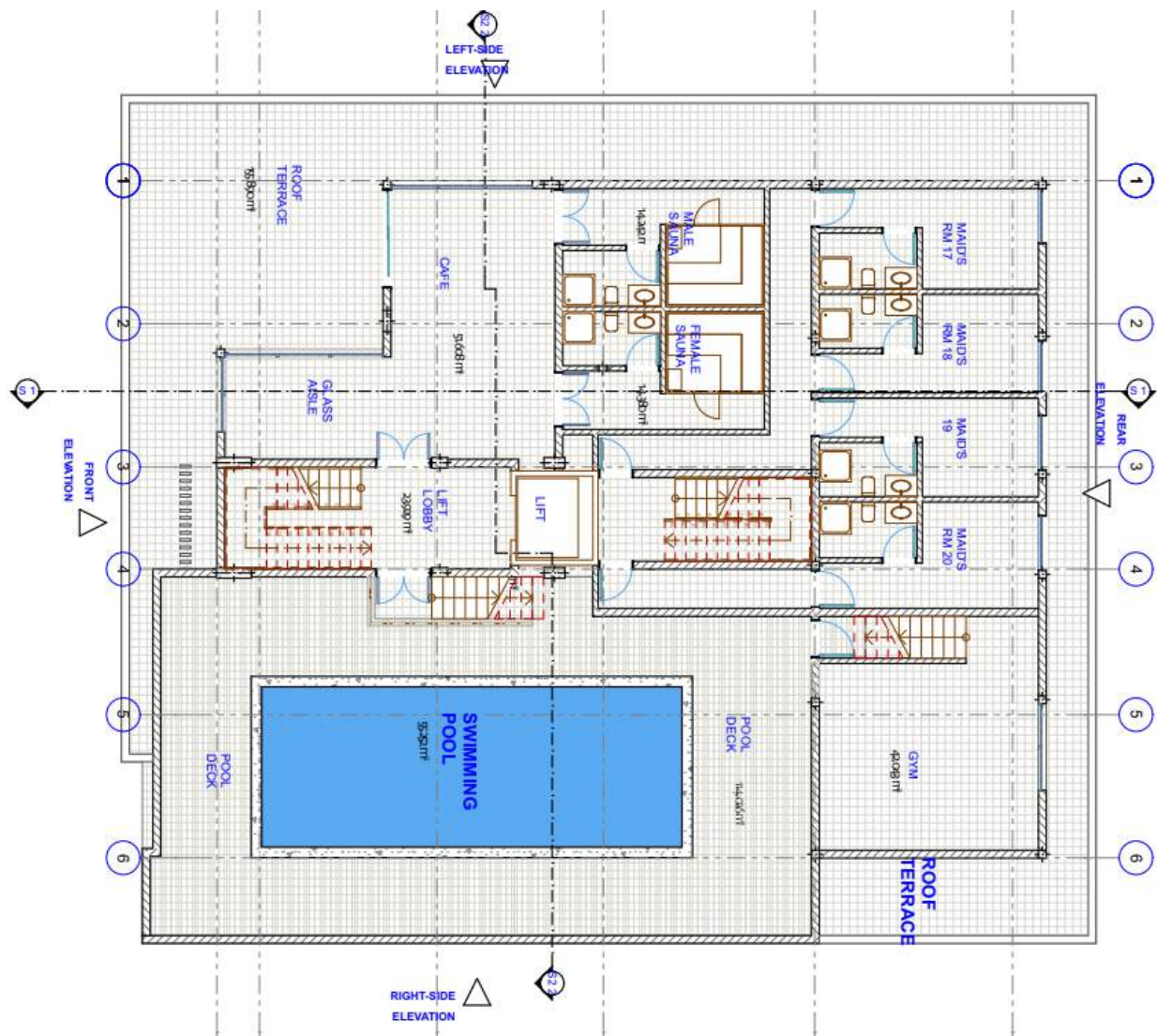
Dominion Maisonette is the perfect home for every family. The building design incorporates a generously proportioned kitchen, welcoming living and dining room, master bedroom suite with walk-in closet and balconies that will encourage you to relax.

There will be absolutely nothing to make you miss out on this gorgeous home that provides lifestyle options aplenty.

Kindly request for our convenient payment plan to get started.







Other Projects



GALILEE HEIGHTS



BIJOU



SOCHI



AMAZON TERRACE



TWIN DUPLEX



OLIVE GARDENS

OUR PROFILE

A subsidiary of Wichtech Group with a wealth of experience in Residential, Commercial and Mixed-Use Developments. Wichtech Homes is focused on delivering optimum results while working with highly experienced architects, engineers and skilled units of all specialties.

The bedrock of our success lies on the selection of most suitable construction sites, tailoring functional/user-friendly designs, utilization of modern fittings, interiors and technologies, highly conscious of environmental protection and timely delivery of projects.